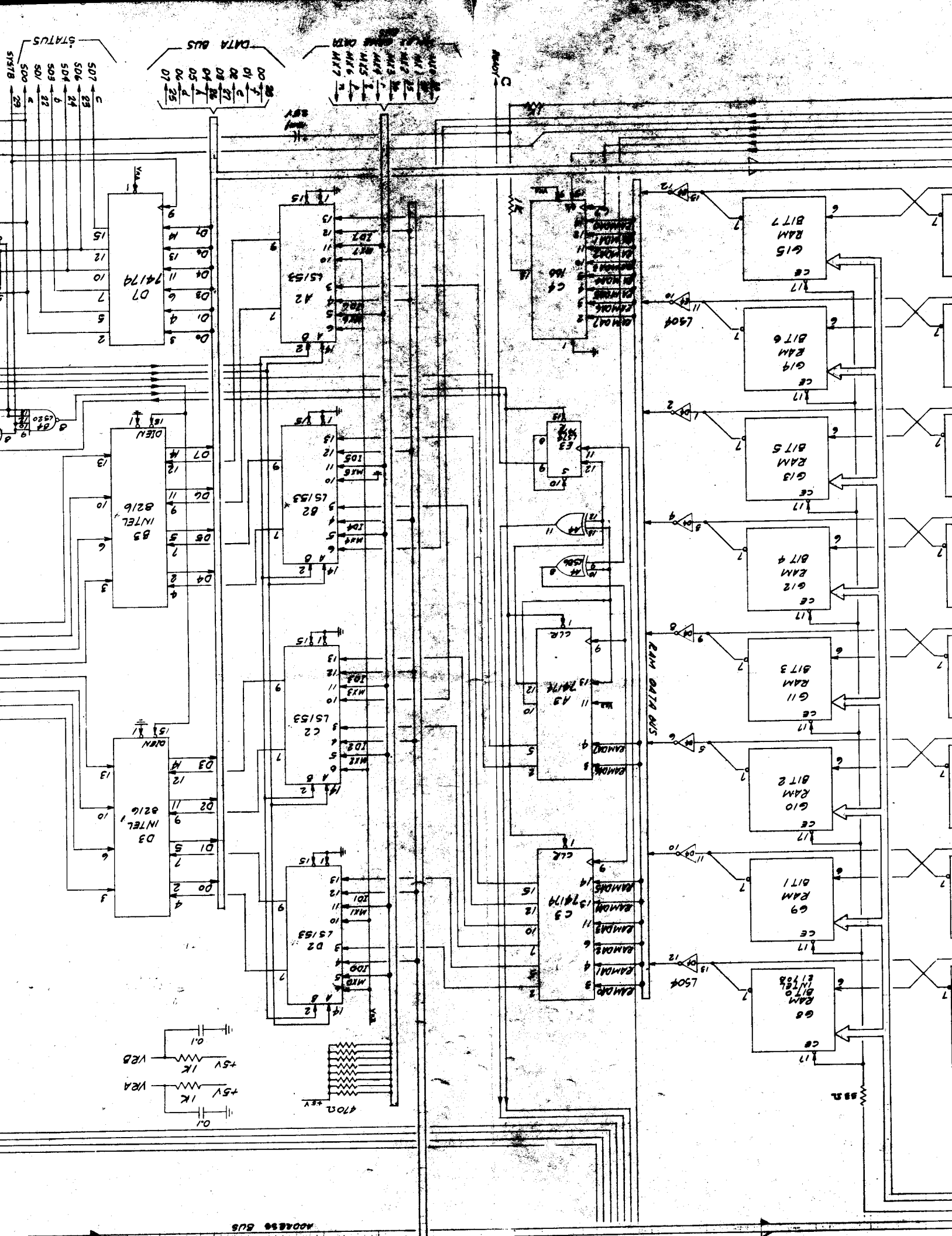
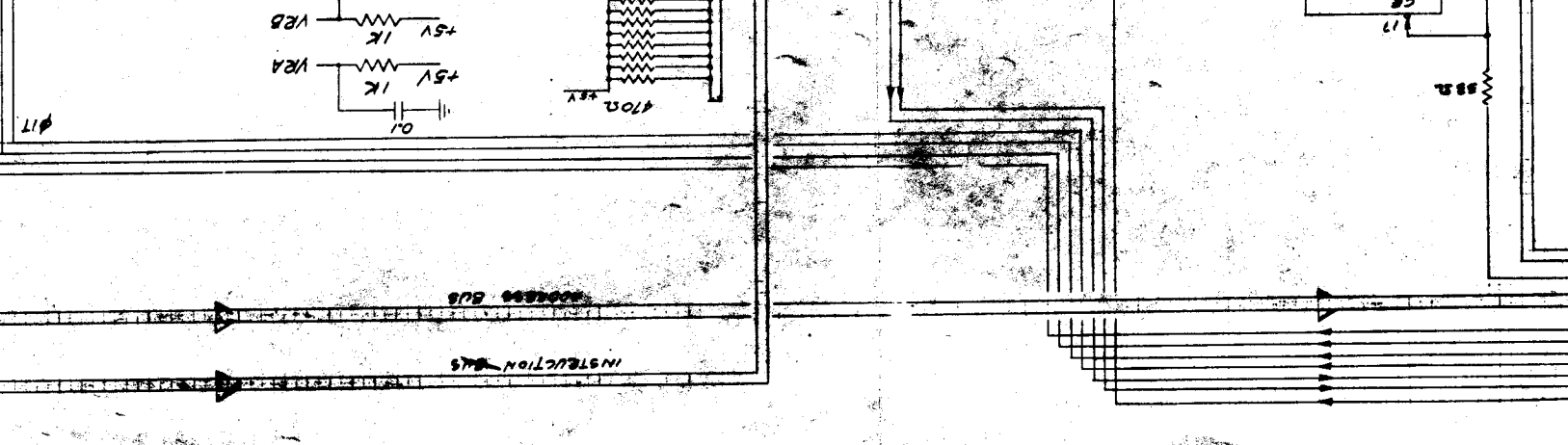


TTL - 7400 SERIES  
 Logic - Motherboard 80-90  
 REVISION #1, 04. SEPT. 1975 BY L.S. 1, R.C. 2, G.L. 3  
 REVISION #2, 04. SEPT. 1975 BY L.S. 1, R.C. 2, G.L. 3  
 REVISION #3, 04. OCT. 1975 BY L.S. 1, R.C. 2, G.L. 3  
 REVISION #4, 04. NOV. 1975 BY L.S. 1, R.C. 2, G.L. 3

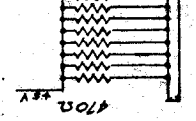
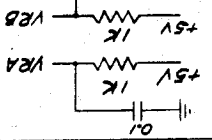








17



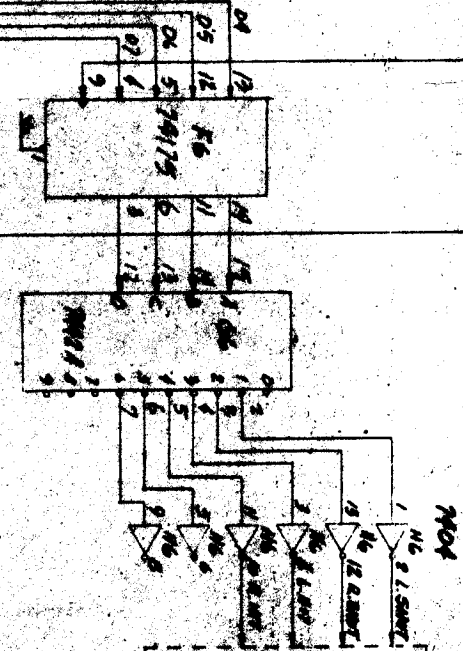
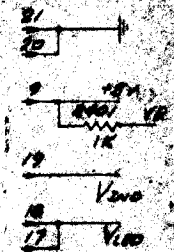
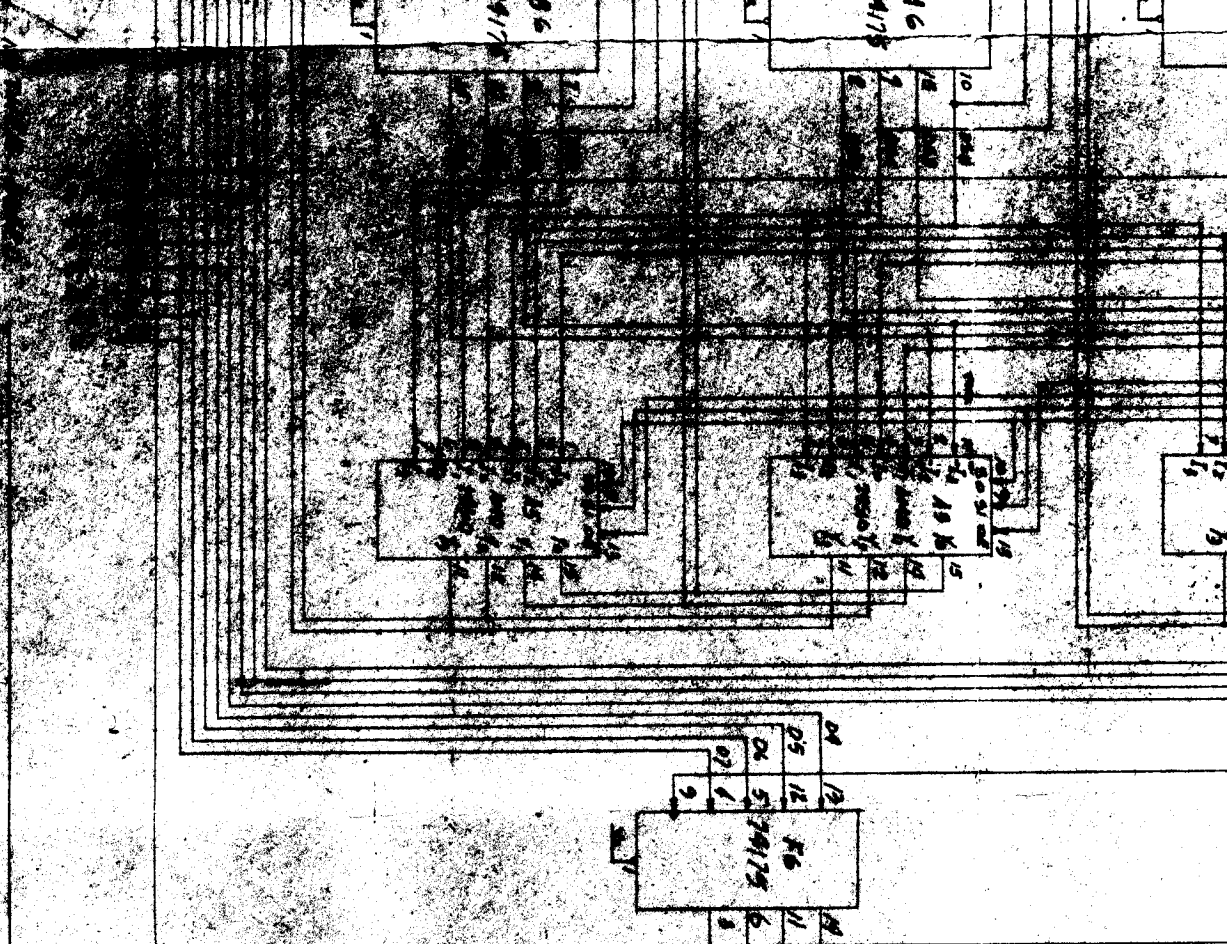
ADDRESS BUS

INSTRUCTION BUS

562

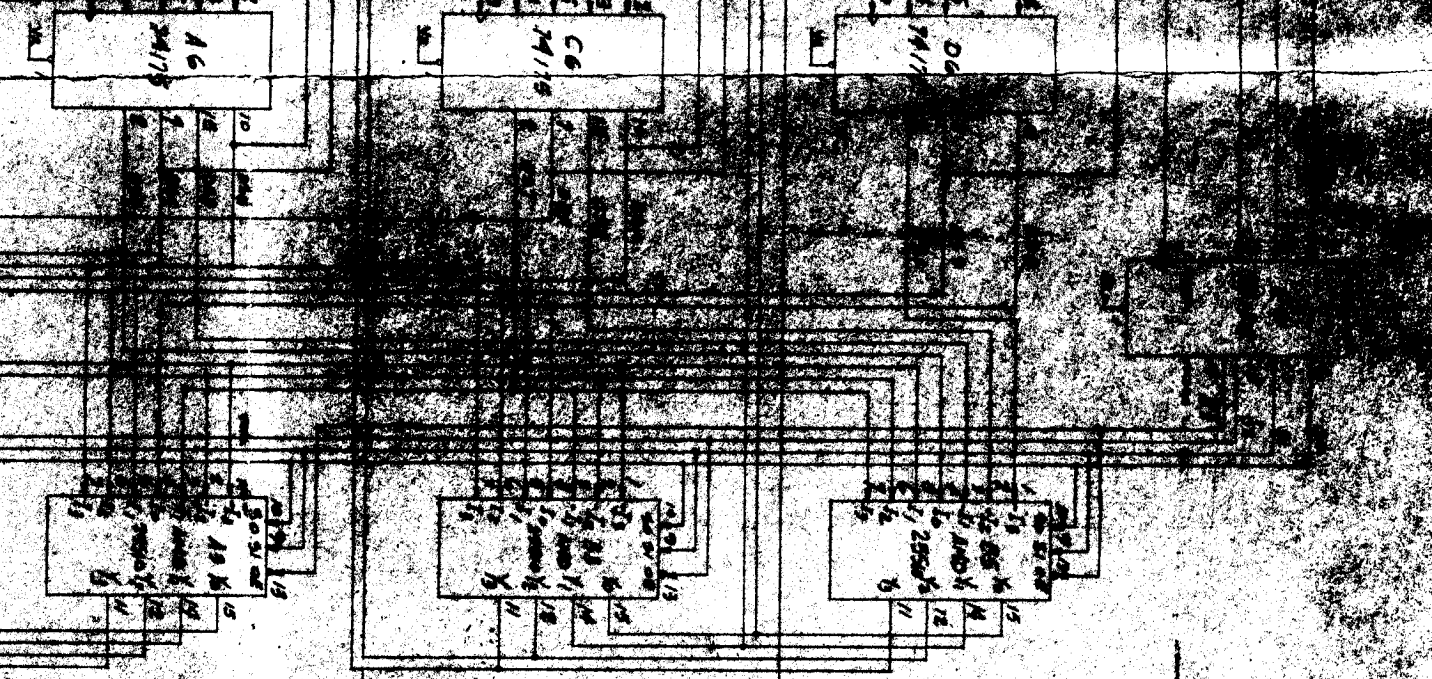
117



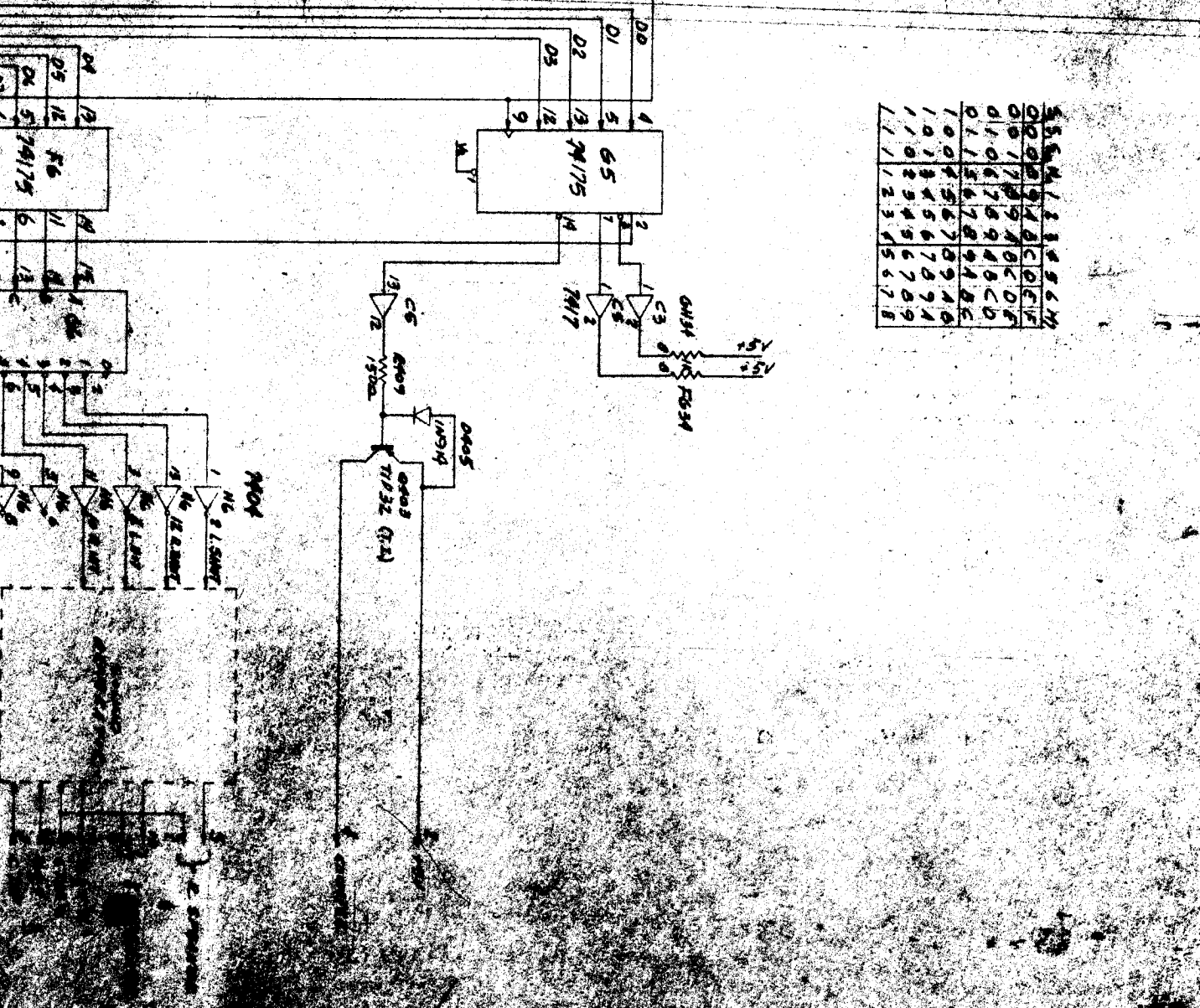


Revision # 2 of Oct 28, 76  
 Drawn by J. J. [unclear]  
 Checked by [unclear]  
 Approved by [unclear]

SCHEMATIC FOR  
 STATE LOGIC OF  
 597-100



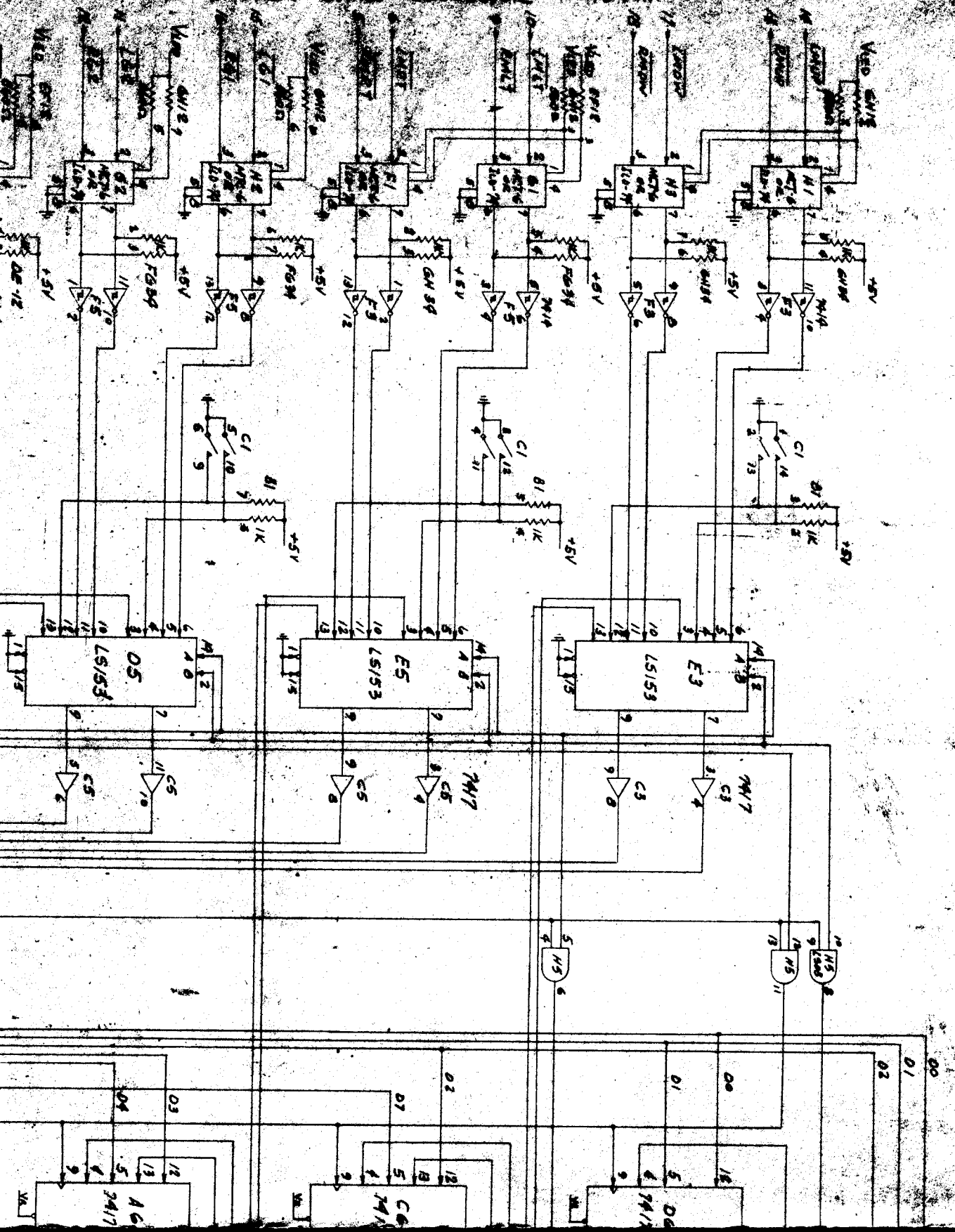
5	6	7	8	9	6	7
0	0	0	1	A	B	C
0	0	1	0	0	0	0
0	1	0	0	1	0	0
0	1	0	1	0	0	0
0	1	1	0	0	0	0
1	0	0	0	0	0	0
1	0	1	0	0	0	0
1	0	1	1	0	0	0
1	1	0	0	0	0	0
1	1	0	1	0	0	0
1	1	1	0	0	0	0
1	1	1	1	0	0	0

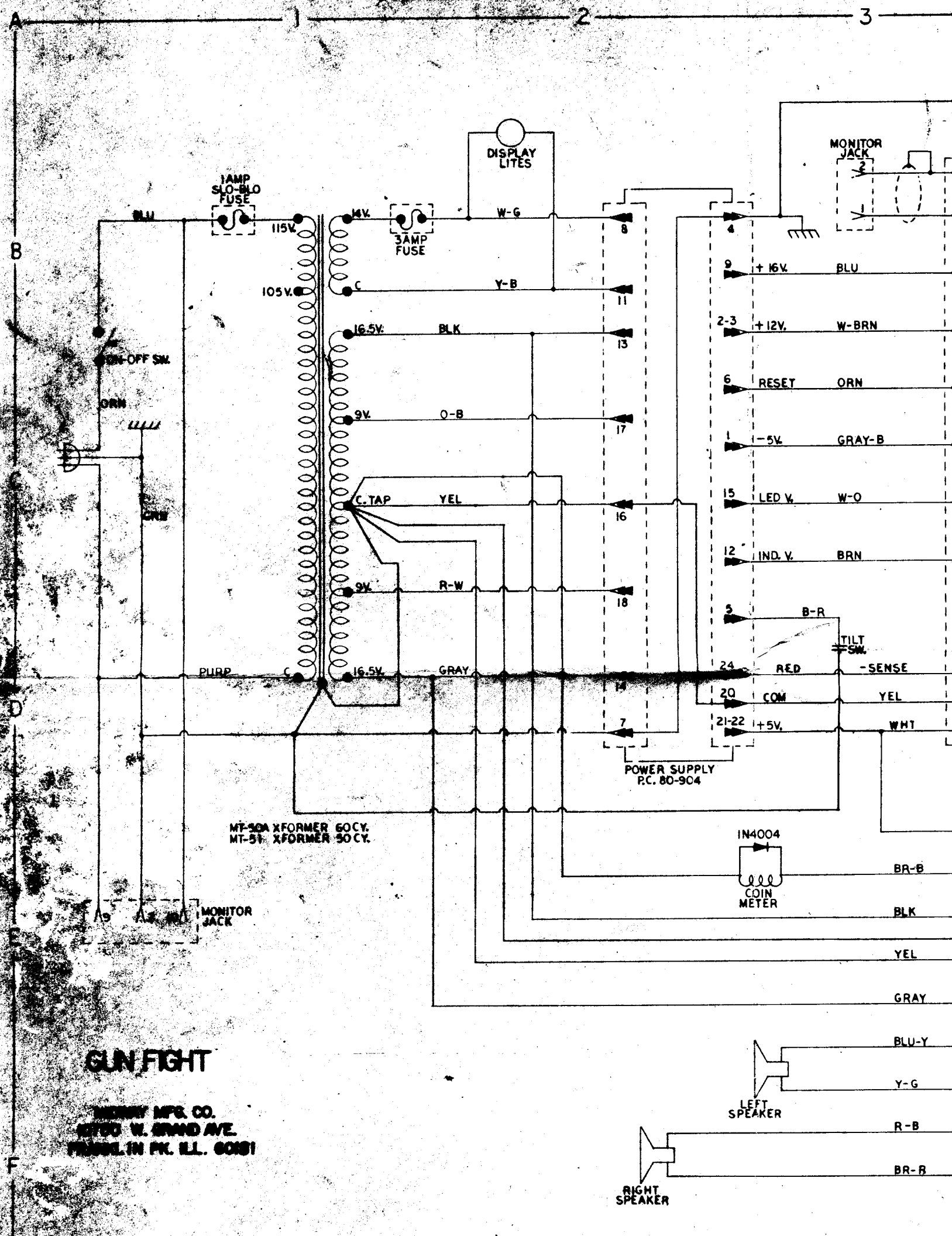






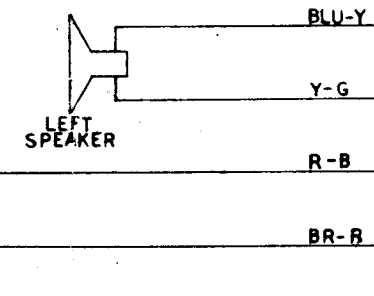
TO CONTROL SIGNAL CONNECTOR 16 PIN





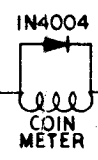
# GUN FIGHT

HENRY MFG. CO.  
1700 W. GRAND AVE.  
FRANKLIN PK. ILL. 60181



MT-90A XFORMER 60CY.  
MT-51 XFORMER 50CY.

POWER SUPPLY  
P.C. 80-904



MONITOR JACK

DISPLAY LITES

1AMP SLO-BLO FUSE

3AMP FUSE

ON-OFF SW.

GRN

GRN

PURP

C. TAP

MONITOR JACK

TILT SW.

-SENSE

COM

+5V

21-22

20

24

RED

B-R

5

IND. V.

12

LED V.

15

-5V

1

RESET

6

+12V

2-3

+16V

9

4

RIGHT SPEAKER

LEFT SPEAKER

BLU-Y

Y-G

R-B

BR-B

BLK

YEL

GRAY

YEL

BLK

BR-B

WHT

W-O

GRAY-B

ORN

W-BRN

BLU

Y-B

W-G

11

13

17

18

8

8

2

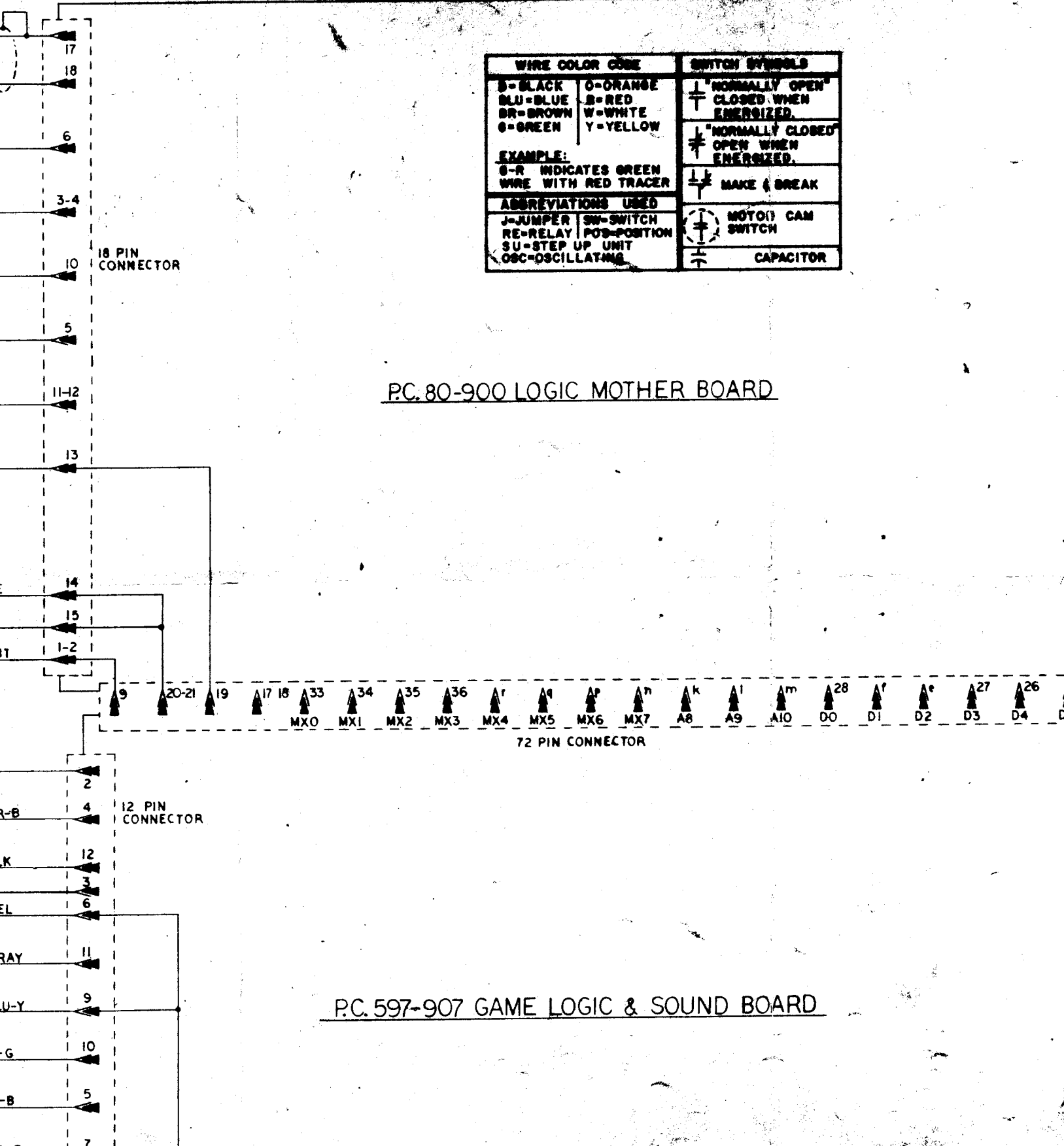
3

2

B

D

F

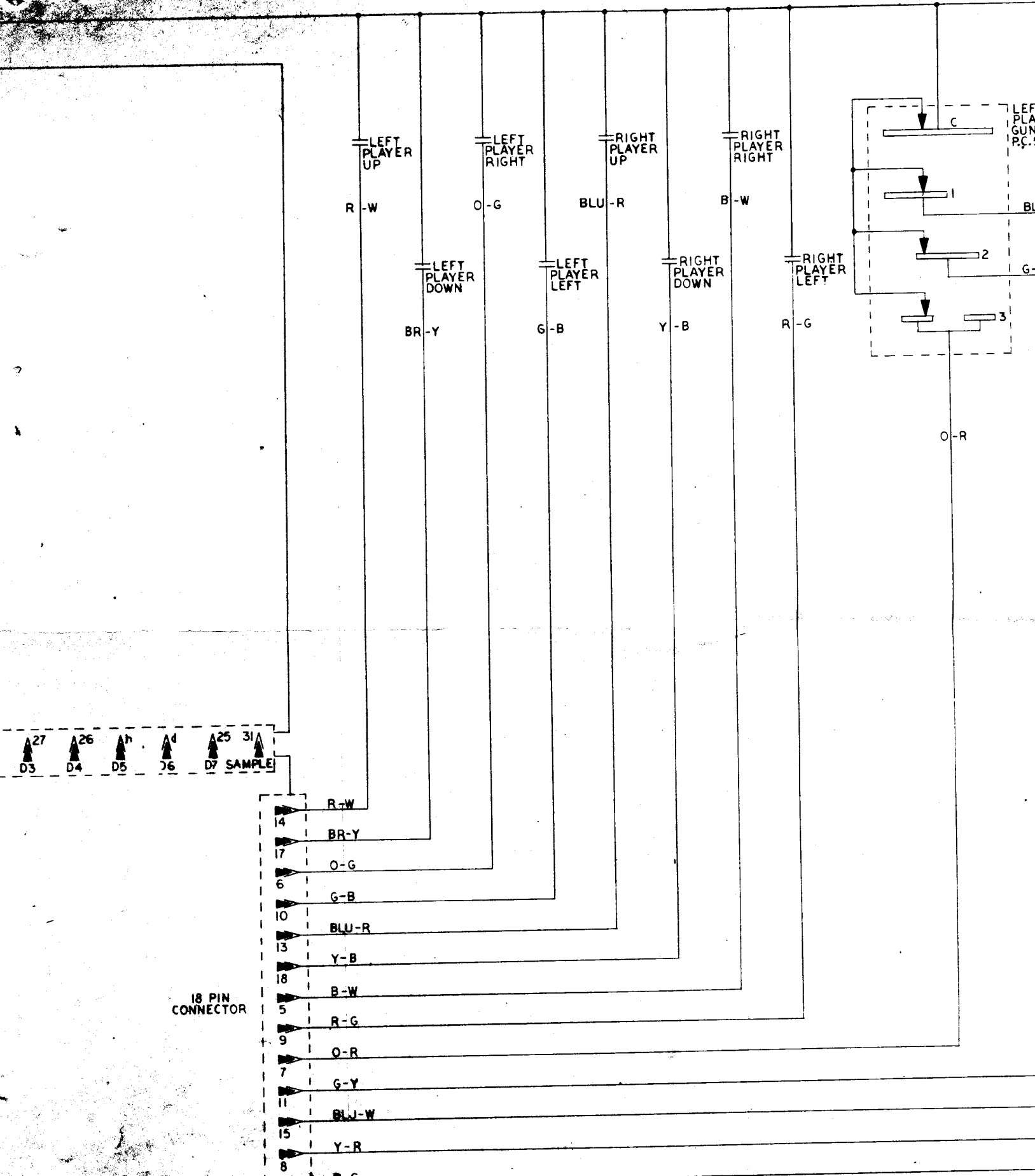


WIRE COLOR CODE		SWITCH SYMBOLS
B-BLACK	O-ORANGE	⊥ "NORMALLY OPEN" CLOSED WHEN ENERGIZED.
BLU-BLUE	R-RED	⊥ "NORMALLY CLOSED" OPEN WHEN ENERGIZED.
BR-BROWN	W-WHITE	⊥ MAKE & BREAK
G-GREEN	Y-YELLOW	⊥ MOTOR CAM SWITCH
EXAMPLE: G-R INDICATES GREEN WIRE WITH RED TRACER		⊥ CAPACITOR
ABBREVIATIONS USED		
J-JUMPER	SW-SWITCH	
RE-RELAY	POS-POSITION	
SU-STEP UP UNIT		
OSC-OSCILLATING		

PC. 80-900 LOGIC MOTHER BOARD

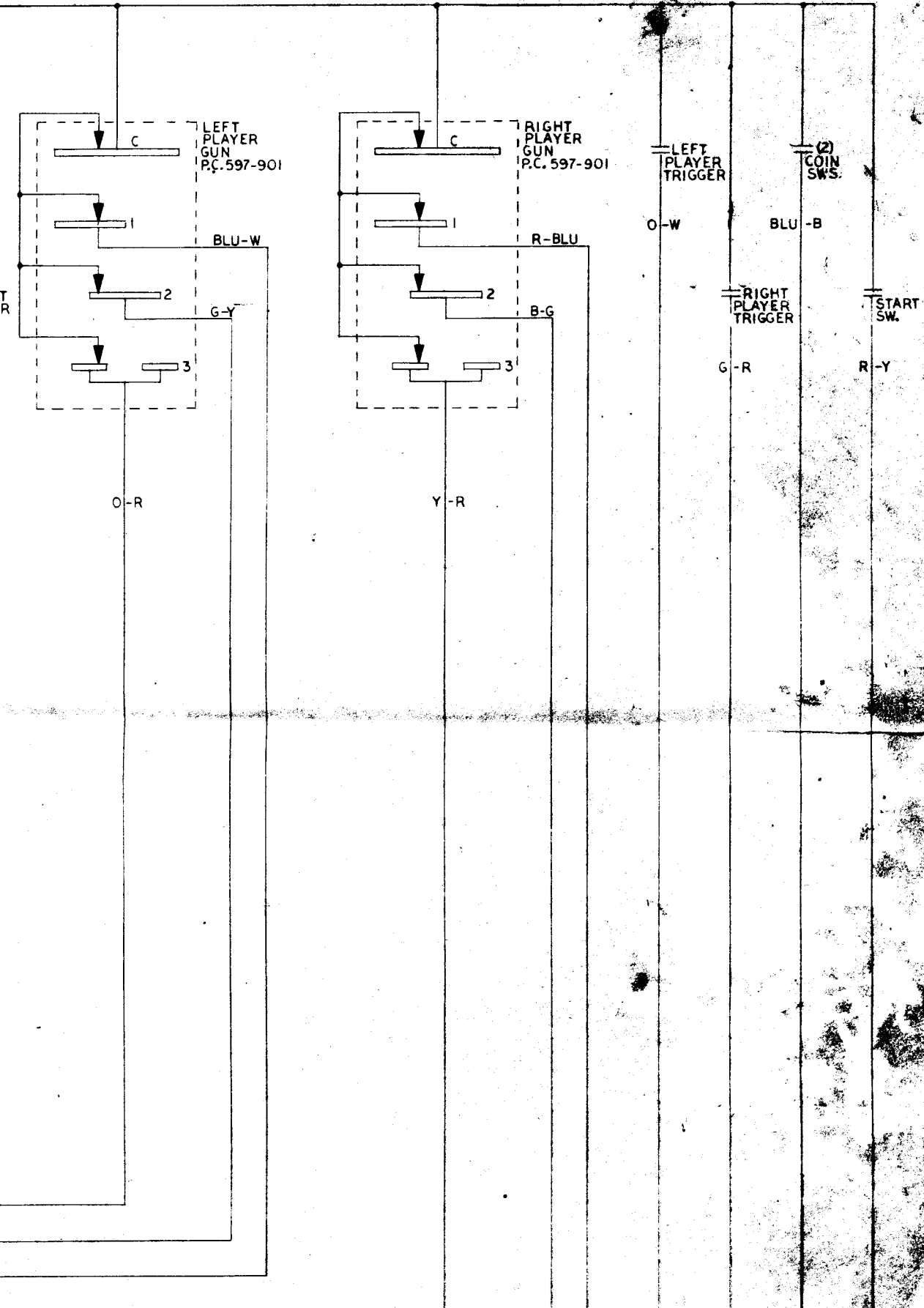
PC. 597-907 GAME LOGIC & SOUND BOARD

\* NOTE: PLAY SWS, INDICATE DIRECTION OF CHARACTER

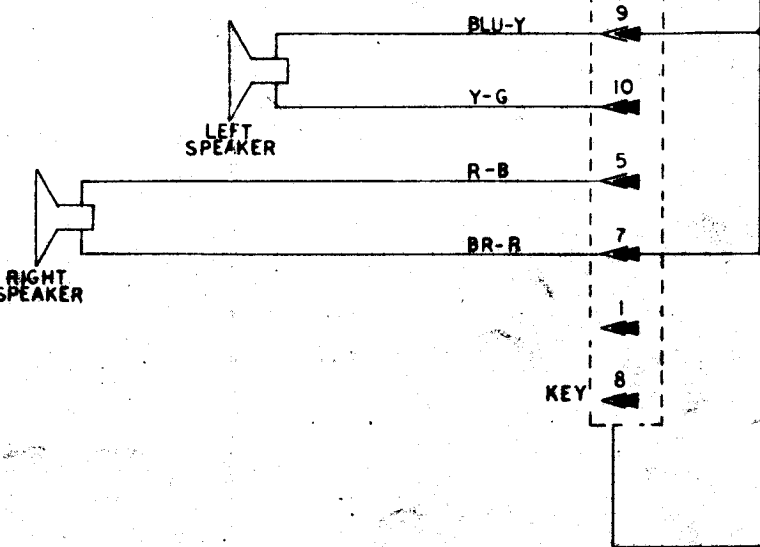


18 PIN CONNECTOR

▲ 27 D3  
 ▲ 26 D4  
 ▲ h D5  
 ▲ d D6  
 ▲ 25 D7  
 ▲ 31 SAMPLE



P.C. 597-907 GAME LOGIC & SOUND



BOARD

CONNECTOR

